

Service	Details
Kilkivan Community Health Centre, Cave Street, Kilkivan	
Doctor	Fortnightly - Tuesday and Wednesday*
Podiatrist	Weekly - Saturday*
Physiotherapist	Fortnightly - Tuesday*
Counsellor	Monthly - date to be arranged at booking time
Women's health specialist	Quarterly*
*For bookings and service information phone 0439 208 558 Monday - Friday from 9am-4pm	
Prescriptions	Take your prescription to the Kilkivan General Store or the Post Office before 11am.

Kilkivan and Goomeri Health Services Guide

May 2019

Goomeri

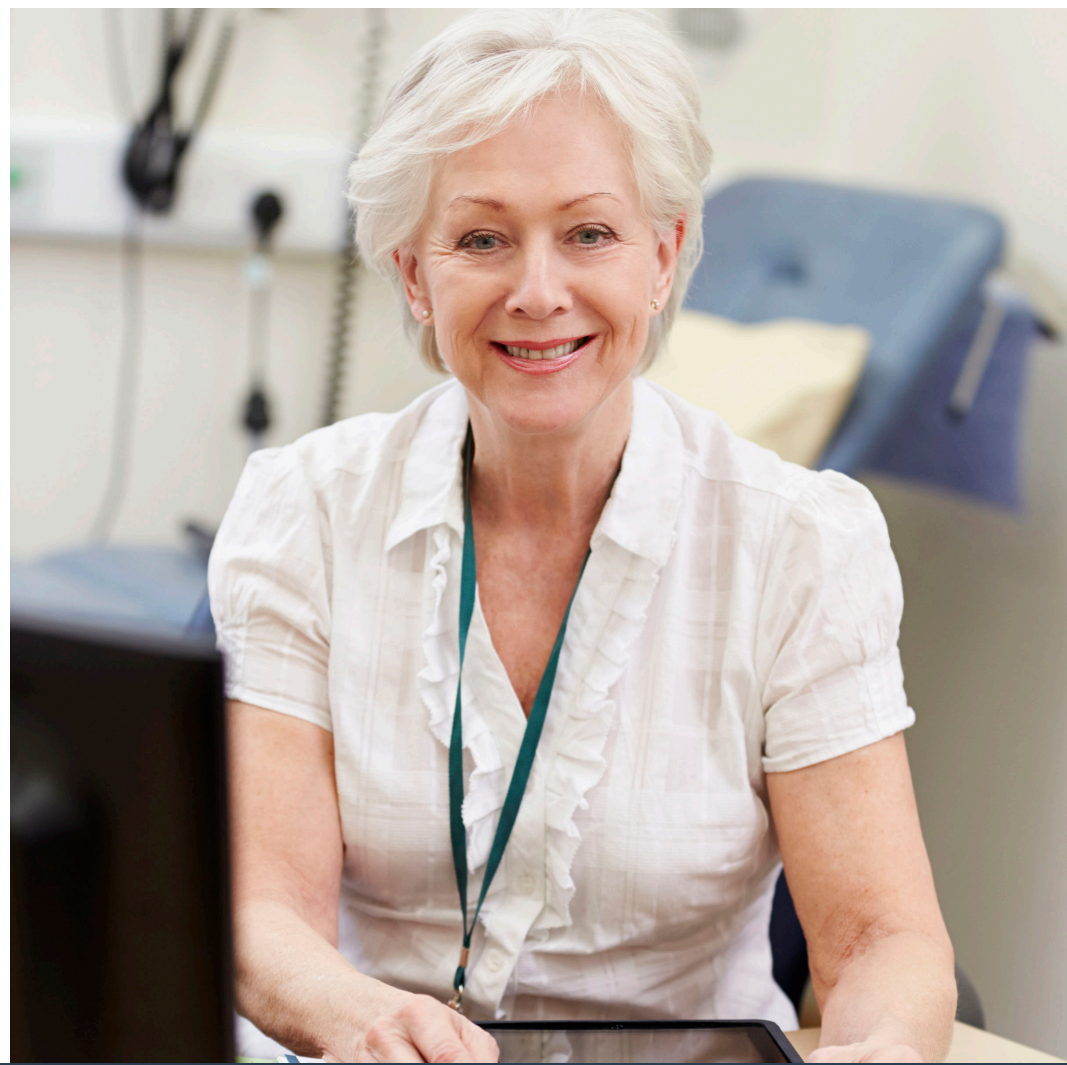
Service	Details
Doctor	Every second Thursday at Goomeri Community Health Centre, 35 Moore Street. Call Murgon Wondai Medical Centre on 4168 2722

Emergency
Unable to breathe?
Suspect heart attack or stroke?
Dial 000 for an ambulance

The Kilkivan First Responders Group will be notified by calling 000 who have access to Community Automated External Defibrillators

My Aged Care
If you have aged care needs or concerns the Australian Government's My Aged Care service can assist you with information and support to find appropriate services that meet your needs.

Call **My Aged Care** on **1800 200 422** or visit **www.myagedcare.gov.au**.
Available 8am-8pm weekdays, and 10am-2pm Saturdays



Community Services

Organisation	Service	Contact	Organisation	Service	Contact
13 HEALTH	Confidential phone service that provides health advice. Talk to a registered nurse 24 hours a day, seven days a week for cost of a local call.	13 HEALTH (13 43 25 84)	Graham House Transport	Volunteer transport to medical appointments. Cost: Small co-payment required. Price on application for medical appointments outside Gympie.	4169 5040
Health Direct	A 24-hour telephone service that operates seven days a week, staffed by registered nurses who provide expert health advice. You can call for advice if you or a member of your family are feeling ill and are unsure what to do, or for health information on a particular concern. For a list of national crisis numbers visit https://about.healthdirect.gov.au/need-help-now	1800 022 222	Little Haven Palliative Care	In-home visits to Kilkivan, appointments at the centre in Gympie, telephone palliative care support, equipment loans. Goomeri: phone support provided for symptom management.	5482 9091
Pregnancy, Birth and Baby concerns	Supports parents on the journey from pregnancy to preschool. Speak to a maternal child health nurse for personal advice and guidance and discover all about pregnancy, birth, being a parent and raising a child. www.pregnancybirthbaby.org.au	1800 882 436	Meals on Wheels	Home delivered meals for people who require assistance. Eligibility assessment required for long-term clients. Cost: \$8 for main meal; \$10 per full meal (soup, main, dessert and juice). Frozen meals delivered to the Kilkivan area only on Wednesdays.	5484 1145
Artius	Artius offers a range of health services across Queensland, from physiotherapy, psychology, employee assistance programs, manual handling courses, job search support, resume development, and vocational training. Many of the services offered to rural and remote communities are available as outreach or over the phone. Email health@artius.com.au	1300 278 487 1300 219 658 1300 986 886	My Aged Care	If you have aged care needs or concerns the Australian Government's My Aged Care service can assist you with information and support to find appropriate services that meet your needs. Available from 8am - 8pm weekdays and 10am - 2pm Saturdays. www.myagedcare.gov.au	1800 200 422
Blue Care	Allied health, nursing, personal care and domestic services. NDIS package support provided. Flexible respite social support group, social support individuals.	1300 258 322	NDIS Local Area Coordinator Gympie	The National Disability Insurance Scheme (NDIS) provides reasonable and necessary funding to people with a permanent and significant disability to access the supports and services needed to live and enjoy their life.	0429 549 707
BreastScreen	Free breast cancer screening available in Gympie on Mondays, Tuesdays and some Saturdays. Available to women aged 40 years and over. Women aged 50-74 are strongly encouraged to have a breast screen every two years. GP referrals are not required. www.breastscreen.qld.gov.au	13 20 50	North Coast Aboriginal Corporation for Community Health	NCACCH provides Aboriginal and/or Torres Strait Islander community members and their families with access to health providers (including GPs and allied health) across the Sunshine Coast, Hinterland and Gympie regions.	5346 9800
Centacare	Aged care, home safety and mental health support.	4162 5096 1300 236 822	STEPS Employment Solutions	A specialised employment provider assisting people back into the workforce who are out of work due to mental health.	5481 2804
Children's Therapy Centre	Works with children with developmental delays, disabilities and health conditions. Provides speech language pathology, psychology, occupational therapy and physiotherapy. Registered NDIS Service Provider, plan managers, support coordinators. Outreach service. Accept Medicare referrals, better start, HCWA and other.	5349 2020	Suncare Community Services	In-home aged care and community services, Consumer Directed Care through Home Care Packages. Short term and emergency respite. Over 50s social group in Kilkivan and Goomeri on the second and last Wednesday every month.	1800 786 227